

Horse **TRAILERS**

HUMBAUR

Competence in Trailers



**7000 SERIES
HORSE TRAILER RANGE**

www.humbaur.com

7000 SERIES

CONTENTS

7000 SERIES	Humbaur seals of quality	4
	Overview all-poly class	14
	MAXIMUS	16
	PEGASUS	18
	ATIS	20
	Overview wood-poly class	22
	MADERO	24
	RAPID	26
	SPIRIT	28
	SINGLE	30
	Overview alu-poly class	32
	CARRUS	34
	RAPID ALU	36
	Overview special class	38
	CLEON	40
	CARRIAGE TRAILERS	42
	Custom-made products	44
	Accessories	46
	Matrix	50

With around 450 production models for private and commercial use, Humbaur is one of the leading trailer manufacturers in Europe. Innovative and experienced. With a presence all over Europe and beyond. As an owner-operated, mid-sized family company, we know what our customers need and how they operate. That is why we develop meticulously and manufacture with great care, while testing our products thoroughly right down to the finest detail. Innovative ideas, state-of-the-art production facilities, a clear focus on quality and competent and comprehensive service – these are our strengths. Strengths which we deploy in the service of our customers.

*Ulrich Humbaur, Shareholder,
Managing Director & CEO*





HUMBAUR – QUALITY AND EXPERIENCE

Many years of experience

As one of the leading manufacturers of car trailers and an up-and-coming producer of semi-trailers, we produce close to 50,000 trailers every year. We have already manufactured more than 450,000 vehicles since our company was founded. The know-how we have acquired over the decades is reflected in every single one of our trailers today. Each one of our roughly 450 production models is always developed and produced using state-of-the-art processes.

High level of quality awareness

Rugged and durable – that's what a trailer has to be. This is why we use only high quality components and always strive for first-class workmanship. Before a trailer leaves our premises every single detail is checked by highly qualified engineers.

Variety and flexibility

We offer our customers flexible and versatile transport solutions in the range 750 kg to 40 t gross vehicle weight. Both private and commercial customers always find the right transport solution for their wide-ranging purposes.

Wide range of accessories

Along with our extensive standard features, we offer a large selection of accessories for each trailer model. This means that by combining various modules every customer can put together a trailer that exactly matches their specific requirements.

Customer service

All-out service from your local dealer and first-hand response to all your queries, suggestions and problems are all part of our comprehensive service package. Whether you need spare parts or just a little assistance in using your trailer – Humbaaur is always there for you.

State-of-the-art production processes

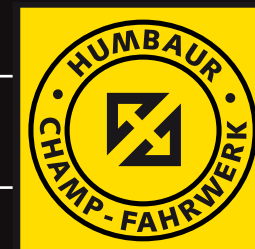
Quality lies in the details – that means that Humbaaur only uses vehicle components from renowned manufacturers. The dialogue we carry on with our suppliers facilitates ongoing improvement of our products.

Made in Germany

We strongly believe in Germany as a centre of innovation. This is why Humbaaur will continue to keep its production facilities in Germany. This is where we create jobs, in order to be able to offer first-class quality from our headquarters here in Gersthofen – quality that is made in Germany.

7000 SERIES

HUMBAUR SEAL OF QUALITY



**A safe travel experience for you
and your horse...**

... that's what our CHAMP-FAHRWERK (chassis) seal of quality stands for. The Humbaur CHAMP-FAHRWERK (chassis) offers the most stability and therefore maximum safety due to the hot galvanized longitudinal beam chassis. The tractive and shearing forces are led directly into the chassis and provide for easy handling for rider and horse with a low centre of gravity and the CHAMP Octagon wheel shock absorbers.

The CHAMP-FAHRWERK (chassis) is thus virtually predestined for extreme loads, both on- and off-road.

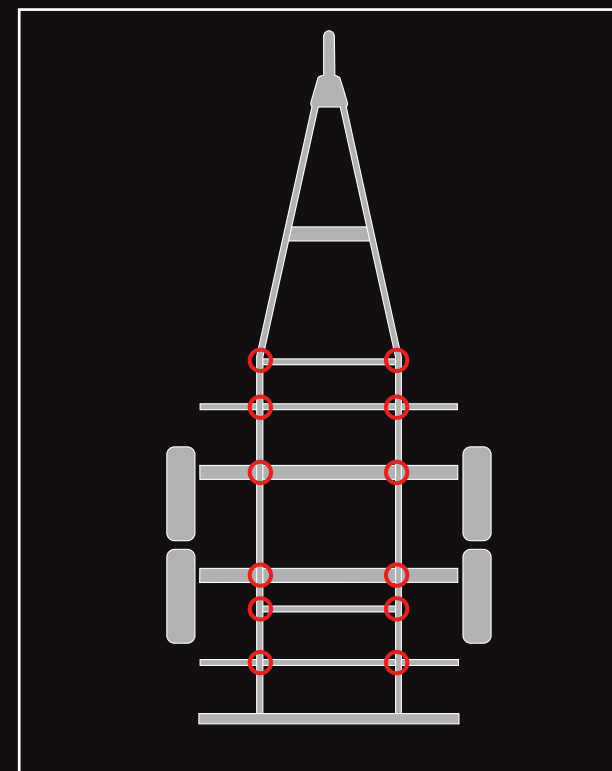
Extraordinarily comfortable: the low loading height and the flat ramp angle provide for easy use.

Extraordinarily practical: all frame components and axles can be individually replaced if damaged.

All Humbaur horse trailers have our CHAMP-FAHRWERK (chassis) as standard equipment.

Summary:

- Optimal longitudinal stability of the trailer due to end-to-end frame longitudinal beams made solid hot-dip galvanized steel profiles
- Tractive and shearing forces are led directly into the chassis
- Favourable centre of gravity and flat ramp angle
- CHAMP Octagon wheel shock absorbers with optimal fine tuning to the load condition of the trailer
- Solid underride protection made of canted sheet steel, hot galvanized and powder-coated
- Cross members screwed in between the longitudinal profiles
- Hexagonal rubber spring axles integrated into the longitudinal beams, with independent wheel suspension





CHAMP-FAHRWERK

(CHASSIS)



7000 SERIES

HUMBAUR SEAL OF QUALITY



Double protection for the durability of your vehicle...

... is our particular concern. For that reason, a special finishing technique was developed – FEUERVERZINKT+PULVERBESCHICHTET (hot galvanized + powder-coated).

Through this unique method – first hot galvanizing and then powder-coating – double corrosion protection comes about.

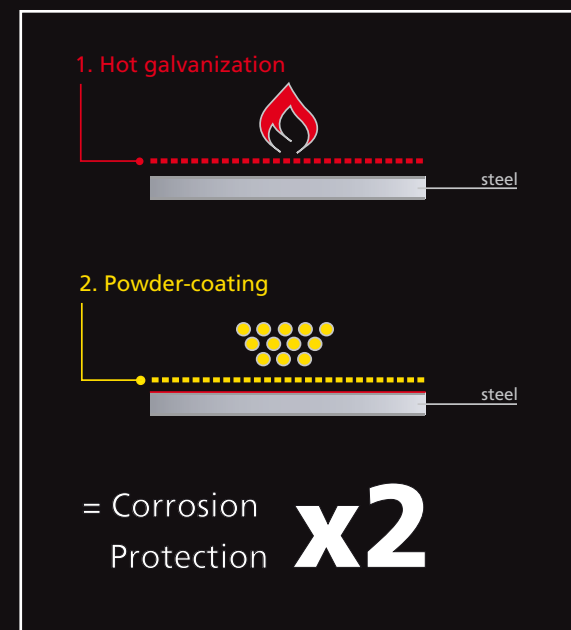
Hot galvanizing is the first protection against corrosion; powder-coating provides for the second layer of protection and a splendid appearance.

Especially at hinges, edges and corners and the drill holes, this enhanced protection takes hold and prevents external influences from damaging these sensitive spots.

All Humbaur horse trailers in the MAXIMUS, PEGASUS, ATIS, MADERO, CARRUS, RAPID/ RAPID ALU and CLEON lines have this special seal.

Summary:

- Double corrosion protection
- Attractive appearance
- Easily repaired if damaged





FEUERVERZINKT+ PULVERBESCHICHTET

(HOT GALVANIZED + POWDER-COATED)



7000 SERIES

HUMBAUR SEAL OF QUALITY



**An extremely durable floor
for you and your horse...**

... that's what our ALUBICOMP-BODEN (floor) seal of quality stands for. The Humbaur ALUBICOMP-BODEN (floor) keeps the promise it makes. Not only is it resistant to moisture, but also due to its low tare weight it increases the load capacity of your horse trailer. Thanks to its sophisticated structure, it is rot-proof and warp-proof, so the surface is not damaged. The floor is distinguished by its durability.

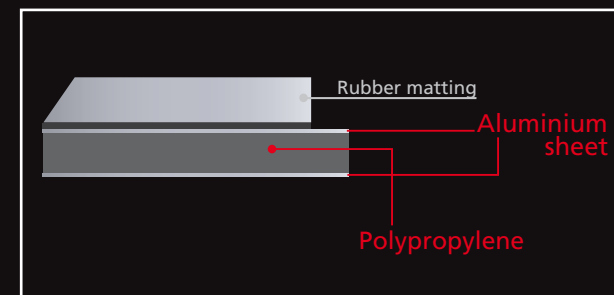
The ALUBICOMP-BODEN (floor) is an aluminium-plastic floor that is effortlessly ready for the loads a horse trailer has to deal with.

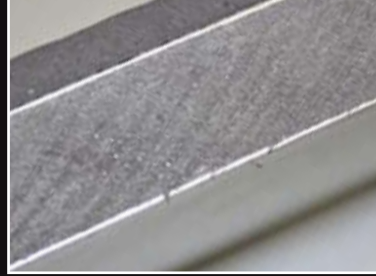
The composite slab construction is composed of two face sheets that consist of a specially coated aluminium plates and a polyurethane rigid foam core. The special coating of the aluminium plates prevents oxidation, e.g., due to ammonia from the faeces of the horses.

All Humbaur horse trailers of the MAXIMUS, PEGASUS and CARRUS lines have the ALUBICOMP-BODEN (floor) as standard equipment. For the other models, it is available at an additional charge.

Summary:

- Resistant to absorption of moisture
- Dimensionally stable and resistant to scratches
- Resistant to ammonia
- Low tare weight, thus higher load capacity





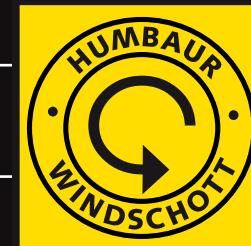
ALUBICOMP-BODEN

(FLOOR)



7000 SERIES

HUMBAUR SEAL OF QUALITY



An optimal atmospheric environment for your horse...

... that's what our WINDSCHOTT (deflector) seal of quality stands for. The patented Humbaur WINDSCHOTT (deflector) offers draft-free ventilation and continuous air circulation through the fine-pored mesh specially developed by us which allows air exchange but repels rainwater.

The porosity of the mesh is designed so that the openings are smaller than drops of water. Only air finds its way into the trailer; water stays on the WINDSCHOTT (deflector) and drains off downward.

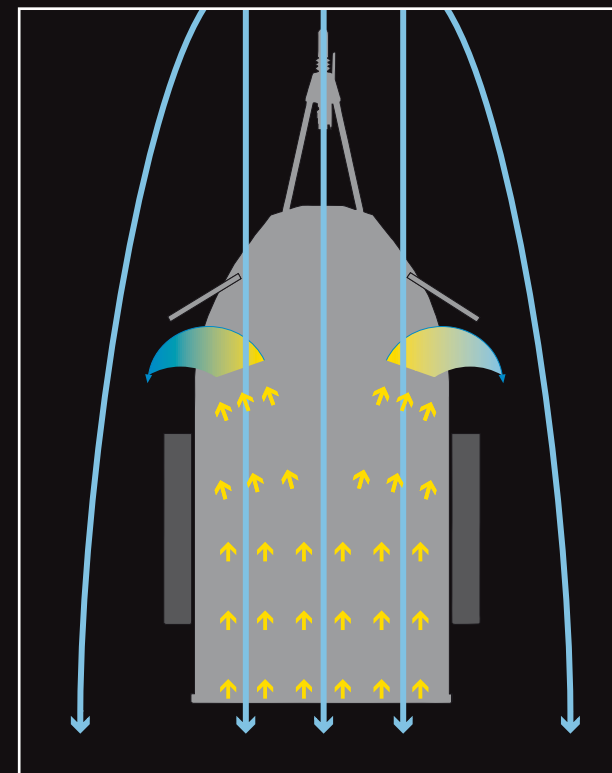
In addition, the WINDSCHOTT (deflector) is equipped with an easy-roll system that provides for quick and low-noise rolling up – the horses are not frightened by the rapid rolling up of the tarp curtains.

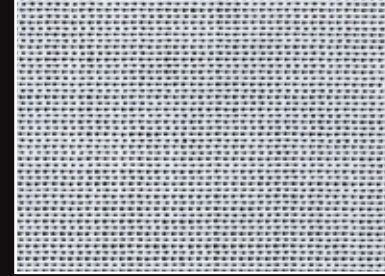
Another advantage of the WINDSCHOTT (deflector) is a bright interior – due to the fine-pored nature of the mesh.

All Humbaur horse trailers, except for the MAXIMUS, PEGASUS and SPIRIT have our patented WINDSCHOTT (deflector) as standard equipment.

Summary:

- Draft-free ventilation
- Continuous air circulation
- Rain and spray are repelled
- Easy to operate due to the easy-roll system
- Bright interior





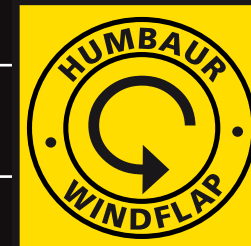
WINDSCHOTT

(DEFLECTOR)



7000 SERIES

HUMBAUR SEAL OF QUALITY



Easy handling for you – optimal environment for your horse...

... that's what our WINDFLAP seal of quality stands for. The Humbaur WINDFLAP offers draft-free interior ventilation through the ventilation openings integrated into the all-poly rear flap.

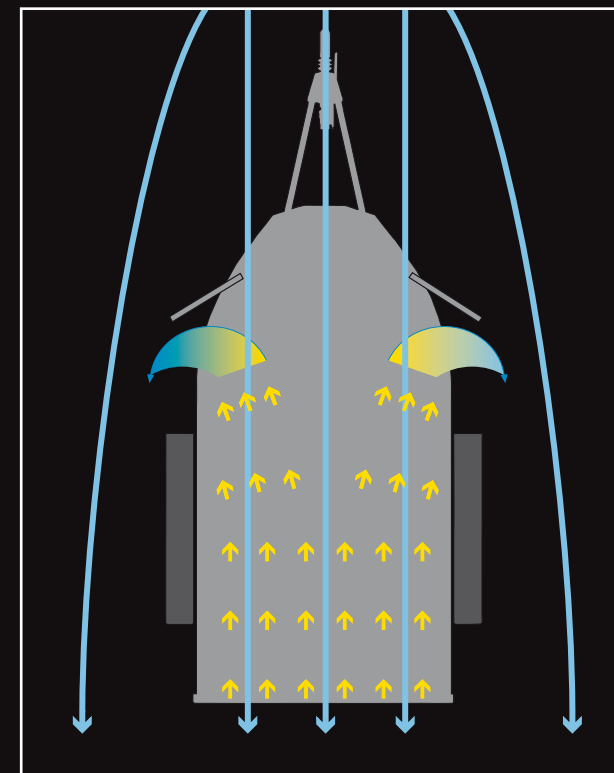
They allow air exchange, but rainwater is repelled. Only air finds its way into the trailer; water remains on the WINDFLAP and drains off downward.

In addition, the WINDFLAP is equipped with a damper system so that easy opening with one hand and gentle lifting and locking in position are guaranteed by the integrated gas-filled shock absorbers.

The Humbaur MAXIMUS and PEGASUS horse trailers have our WINDFLAP as standard equipment.

Summary:

- Gentle opening and locking in position due to integrated gas-filled shock absorbers
- Uncomplicated operation due to damper system
- Draft-free ventilation
- Continuous air circulation
- Rain and spray are repelled
- Low-noise, stress-free travelling for the horse





WINDEFLAP



7000 SERIES

OVERVIEW

ALL



-POLY CLASS



7000 SERIES



TECHNICAL DATA

MAXIMUS

Modell no.	7390	7391
Box dimensions in mm	3480 x 1720 x 2350	3480 x 1720 x 2350
Permissible gross vehicle weight	2000	2400
Load capacity in kg	1025	1425
Tyre size in inches	15	15

MAXIMUS – the luxury class with all-poly structure. With a wide range of colours, a very large interior and aerodynamic look, the MAXIMUS line meets the aesthetic standards of the horse enthusiast. Due to its outstanding technology, the MAXIMUS guarantees optimal safety, easy handling and comfort for driver and horse.

The MAXIMUS is available in the following colours: anthracite, silver, dark blue, dark green, purple-red, red, lime yellow with shiny metallic surface finish and in white, in each case with one or two colours. You can thus optimally adapt the MAXIMUS to your colour preferences.





Hot-dip galvanized railing on tack room and two removable feeding troughs



Centre separation wall with locking device, side kick protection made of hot galvanized sheet steel



Illuminated tack room, extendible and pivoting saddle holder

STANDARD FEATURES

Benefits that convince: MAXIMUS – the all-poly trailer from Humbaur

- **Chassis:** Hot galvanized CHAMP-FAHRWERK (chassis) with longitudinal beam chassis, rubber spring axles and independent wheel suspension in combination with CHAMP Octagon wheel shock absorbers, extremely low loading height and flat ramp angle
- **Floor:** ALUBICOMP-BODEN (floor) with two overlays of aluminium plates, also 8-mm-thick rubber bed with hammer finish surface, glued and sealed
- **Electric system:** Interior lighting and tack room lighting can be switched on. Round designer lamps built in, protected
- **Body:** Entire body made of glass-fibre reinforced plastic (GRP), side kick protection due to two hot galvanized steel plates laminated into the side walls; underride protection and rear hinges hot galvanized + powder-coated. Easy opening and locking in position due to gas springs with WINDFLAP and tack room door. Gas-spring-supported tail gate with rubber matting, including anti-slip strips and side slippage stop. Tinted 5-way adjustable vent windows with safety bars for sufficient ventilation

- **Interior equipment:** Side cushioning on both sides in the interior. Easily adjustable screwed-in centre separation wall (can also be locked with closed tail gait), with transparent soft PVC. Individual parts of the separation wall frame can be easily replaced due to the screw design. Panic locking device of divided chest bars can be unlocked from outside. 3-way adjustable, divided rear bars can be adjusted to the size of your horse. The entrance door and the tack room door of the MAXIMUS have a 3-point lock
- Standard large tack room with extendible and pivoting saddle holder



7000 SERIES



TECHNICAL DATA

PEGASUS

Modell no.	7380	7381
Box dimensions in mm	3370x1710x2300	3370x1710x2300
Permissible gross vehicle weight	2000	2400
Load capacity in kg	1170	1570
Tyre size in inches	15	15

The PEGASUS, the comfort class in the all-poly range for two horses. Like all Humbaur horse trailers, the PEGASUS with its high standard of quality is ideal both for leisure riders and for professional riders. A pleasant travel experience is thus guaranteed for you and your horse.

The PEGASUS is available in the following colours: anthracite, silver, dark blue, dark green, purple-red, red, lime yellow with shiny metallic surface finish and in white, in each case with one or two colours. You can thus optimize the PEGASUS to your colour preferences.





Rubber matting on tail gate with kick protection and side slippage stop



Centre separation wall with locking device



Illuminated tack room, extendible and pivoting saddle holder

STANDARD FEATURES

Benefits that convince: PEGASUS – the all-poly trailer from Humbaur

- **Chassis:** Hot galvanized CHAMP-FAHRWERK (chassis) with longitudinal beam chassis, rubber spring axles and independent wheel suspension in combination with CHAMP Octagon wheel shock absorbers, extremely low loading height and flat ramp angle
- **Floor:** ALUBICOMP-BODEN (floor) with two overlays of aluminium plates, also 8-mm-thick rubber bed with hammer finish surface, glued and sealed
- **Electric system:** Interior lighting and tack room lighting can be switched on. Round designer lamps built in, protected
- **Body:** Entire body made of glass-fibre reinforced plastic (GRP), side kick protection due to two hot galvanized steel plates laminated into the side walls; underride protection and rear hinges hot galvanized + powder-coated. Easy opening and locking in position due to gas springs with WINDFLAP and tack room door. Gas-spring-supported tail gate with rubber matting, including anti-slip strips and side slippage stop. Tinted 5-way adjustable vent windows with safety bars for sufficient ventilation

- **Interior equipment:** Side cushioning on both sides in the interior. Easily adjustable screwed-in centre separation wall (can also be locked with closed tail gait), with transparent soft PVC. Individual parts of the separation wall frame can be easily replaced due to the screw design. Panic locking device of divided chest bars can be unlocked from outside. 3-way adjustable, divided rear bars can be adjusted to the size of your horse. The entrance door and the tack room door of the PEGASUS have a 3-point lock
- Large tack room with extendible and pivoting saddle holder, lockable



7000 SERIES



TECHNICAL DATA

ATIS

Modell no.	7363	7364
Box dimensions in mm	3350 x 1710 x 2300	3350 x 1710 x 2300
Permissible gross vehicle weight	2000	2400
Load capacity in kg	1072	1472
Tyre size in inches	15	15

The ATIS, the entry into the all-poly range for two horses at a reasonable price. The bright, even larger interior keeps the horses from getting nervous, so that you can use it without any trouble – ideal for rider and horse. The aerodynamically reinforced poly hood gives this trailer an elegant appearance and provides for fuel-conserving travel – an all-round appealing horse trailer.

The ATIS is available in the following colours: anthracite, silver, dark blue, dark green, purple-red, red, lime yellow with shiny metallic surface finish and in white, in each case with one or two colours. You can thus optimize the ATIS to your colour preferences.





Solid rear supports and hinges – hot galvanized and powder-coated



Centre separation wall with locking device, chest and rear bars



Large tack room, lockable

STANDARD FEATURES

Benefits that convince: ATIS – the all-poly trailer from Humbaur

- **Chassis:** Hot galvanized CHAMP-FAHRWERK (chassis) with longitudinal beam chassis, rubber spring axles and independent wheel suspension in combination with CHAMP Octagon wheel shock absorbers, extremely low loading height and flat ramp angle
- **Floor:** Special wood multiply glued so as to be water-proof, an 8-mm-thick rubber bed with hammer finish surface, glued and sealed
- **Electric system:** Interior lighting can be switched on, multifunctional lamps built into the rear supports, protected
- **Body:** Entire body made of glass-fibre reinforced plastic (GRP) with aerodynamically shaped poly hood. The solid outside frame, the rear and front side support, the underride protection and the rear hinges are made of hot galvanized sheet steel that is powder-coated. Gas-spring-supported tail gate with rubber matting, including anti-slip strips and side slippage stop. Tinted 5-way adjustable vent windows with safety bars for sufficient ventilation

- **Interior equipment:** Easily adjustable screwed-in centre separation wall (can also be locked with closed tail gate), with transparent soft PVC. Individual parts of the separation wall frame can be easily replaced due to the screw design. Panic locking device of divided chest bars can be unlocked from outside. 3-way adjustable, divided rear bars can be adjusted to the size of your horse
- Large tack room, lockable



7000 SERIES

OVERVIEW

WOOD



- POLY CLASS



7000 SERIES



TECHNICAL DATA

MADERO

Modell no.	7343	7344
Box dimensions in mm	3340 x 1710 x 2310	3340 x 1710 x 2310
Permissible gross vehicle weight	2000	2400
Load capacity in kg	1110	1510
Tyre size in inches	15	15

The MADERO, the exclusive horse trailer with wooden body and aerodynamic fairing that provide for more economical travel. It has the largest volume among the wooden trailers and thus offers sufficient room for two horses.

The MADERO is available with anthracite side walls and a silver poly hood with shiny metallic surface finish. Even available with a black poly hood with shiny metallic surface finish.





Poly hood with patented WINDSCHOTT (deflector) and easy-roll system



Easily adjustable, screwed-in centre separation wall with transparent soft PVC



3-way adjustable, divided rear bars for perfect adaptation

STANDARD FEATURES

Benefits that convince:

MADERO – the wood-poly trailer from Humbaur

- **Fahrwerk:** Hot galvanized CHAMP-FAHRWERK (chassis) with longitudinal beam chassis, rubber spring axles and independent wheel suspension in combination with CHAMP Octagon wheel shock absorbers, extremely low loading height and flat ramp angle.
- **Floor:** Special wood multiply glued so as to be waterproof, an 8-mm-thick rubber bed with hammer finish surface, glued and sealed.
- **Electric system:** Interior lighting can be switched on. Multifunctional safety lamps in the rear supports.
- **Body:** Made entirely of special wood multiply glued so as to be waterproof, with a UV-resistant plastic coating. All mountings, including those of the entrance door, are made of anodised aluminium profiles. The solid outside frame, the rear and front side support, the underride protection and the rear hinges are made of hot galvanized sheet steel that is powder-coated. Gas-spring-supported tail gate with rubber matting, including anti-slip strips and side slippage stop. It's crowned by the

aerodynamically reinforced GRP-poly hood with patented WINDSCHOTT (deflector). Tinted 5-way adjustable vent windows with safety bars for sufficient ventilation.

- **Interior equipment:** Easily adjustable screwed-in centre separation wall (can also be locked with closed tail gate), with transparent soft PVC. Individual parts of the separation wall frame can be easily replaced due to the screw design. Panic locking device of divided chest bars can be unlocked from outside. 3-way adjustable, divided rear bars can be adjusted to the size of your horse.



7000 SERIES



TECHNICAL DATA

RAPID

Modell no.	7325	7326
Box dimensions in mm	3150 x 1700 x 2290	3150 x 1700 x 2290
Permissible gross vehicle weight	2000	2400
Load capacity in kg	1200	1600
Tyre size in inches	15	15

The RAPID, the compact horse trailer with wooden body, is designed for two horses and provides for a safe travel experience.

Its plastic-coated and UV-resistant platform gates are thus extremely robust and distinguish this trailer in the exclusive Humbaur design (anthracite side walls and a grey poly hood).





Poly hood with patented WINDSCHOTT (deflector) and easy-roll system



3-way adjustable, divided rear bars for perfect adaptation



Tinted 5-way adjustable vent windows with safety bars inside

STANDARD FEATURES

Benefits that convince: RAPID – the wood-poly trailer from Humbaur

- **Chassis:** Hot galvanized CHAMP-FAHRWERK (chassis) with longitudinal beam chassis, rubber spring axles and independent wheel suspension in combination with CHAMP Octagon wheel shock absorbers, extremely low loading height and flat ramp angle.
- **Floor:** Special wood multiply glued so as to be waterproof, an 8-mm-thick rubber bed with hammer finish surface, glued and sealed.
- **Electric system:** Interior lighting can be switched on. Multifunctional safety lamps in the rear supports.
- **Body:** Made entirely of special wood multiply glued so as to be waterproof, with a UV-resistant plastic coating. All mountings, including those of the entrance door, are made of anodised aluminium profiles. The solid outside frame, the rear side support and the underride protection are made of hot galvanized sheet steel that is powder-coated. Gas-spring-supported tail gait with rubber granulate matting. This provides for safe use by your horse. It's crowned by the aerodynamically reinforced

GRP-poly hood with patented WINDSCHOTT (deflector). Tinted 5-way adjustable vent windows with safety bars for sufficient ventilation.

- **Interior equipment:** Easily adjustable screwed-in centre separation wall (can also be locked with closed tail gait), with transparent soft PVC. Individual parts of the separation wall frame can be easily replaced due to the screw design. Panic locking device of divided chest bars can be unlocked from outside. 3-way adjustable, divided rear bars can be adjusted to the size of your horse.



7000 SERIES



TECHNICAL DATA

SPIRIT

Modell no.	7324
Box dimensions in mm	3150 x 1700 x 2290
Permissible gross vehicle weight	2000
Load capacity in kg	1282
Tyre size in inches	13

The SPIRIT, the horse trailer with wooden body, is designed for mare and foals and is ideal for daily use.

The SPIRIT is available with black side walls and a grey poly hood.





Available with the patented WINDSCHOTT (deflector) as standard equipment



Continuous rear bar and chest bar



Multifunctional safety lamps in the rear supports

STANDARD FEATURES

Benefits that convince: SPIRIT the wood-poly trailer from Humbaur

- **Chassis:** Hot galvanized CHAMP-FAHRWERK (chassis) with longitudinal beam chassis, rubber spring axles and independent wheel suspension in combination with CHAMP Octagon wheel shock absorbers, extremely low loading height and flat ramp angle
- **Floor:** Special wood multiply glued so as to be waterproof, an 8-mm-thick rubber bed with hammer finish surface, glued and sealed
- **Electric system:** Interior lighting can be switched on. Multifunctional safety lamps in the rear supports
- **Body:** Made entirely of special wood multiply glued so as to be waterproof, with a UV-resistant plastic coating. All mountings, including those of the entrance door, are made of anodised aluminium profiles. The solid outside frame, the rear side support, the underride protection and the rear hinges are made of hot galvanized sheet steel. Gas-spring-supported tail gate with rubber granulate matting. This provides for safe use by your horse. It's crowned by the aerodynamically reinforced

GRP-poly hood with patented WINDSCHOTT (deflector). Tinted 5-way adjustable vent windows with safety bars for sufficient ventilation

- **Interior equipment:** This model has a 3-way adjustable continuous rear bar and a chest bar that can be unlocked by a panic locking device from outside



7000 SERIES



TECHNICAL DATA

SINGLE

Modell no.	7312
Box dimensions in mm	3150 x 1350 x 2280
Permissible gross vehicle weight	1600
Load capacity in kg	1000
Tyre size in inches	13

The SINGLE, the horse trailer with wooden body, is designed for mare and foals and is ideal for daily use.

The SINGLE is available with anthracite side walls and a grey poly hood.





Available with the patented WINDSCHOTT (deflector) as standard equipment



Continuous rear bar and chest bar



Multifunctional safety lamps in the rear supports

STANDARD FEATURES

Benefits that convince: SINGLE– the wood-poly trailer from Humbaur

- **Chassis:** Hot galvanized CHAMP-FAHRWERK (chassis) with longitudinal beam chassis, rubber spring axles and independent wheel suspension in combination with CHAMP Octagon wheel shock absorbers, extremely low loading height and flat ramp angle
- **Floor:** Special wood multiply glued so as to be waterproof, an 8-mm-thick rubber bed with hammer finish surface, glued and sealed
- **Electric system:** Interior lighting can be switched on. Multifunctional safety lamps in the rear supports
- **Body:** Made entirely of special wood multiply glued so as to be waterproof, with a UV-resistant plastic coating. All mountings, including those of the entrance door, are made of anodised aluminium profiles. The solid outside frame, the rear side support, the underride protection and the rear hinges are made of hot galvanized sheet steel. Gas-spring-supported tail gate with rubber granulate matting. This provides for safe use by your horse. It's crowned by the aerodynamically reinforced

GRP-poly hood with patented WINDSCHOTT (deflector). Tinted 5-way adjustable vent windows with safety bars for sufficient ventilation

- **Interior equipment:** This model has a 3-way adjustable continuous rear bar and a chest bar that can be unlocked by a panic locking device from outside



7000 SERIES

OVERVIEW

ALU



- POLYCLASS



7000 SERIES



TECHNICAL DATA

CARRUS

Modell no.	7353	7354
Box dimensions in mm	3300 x 1700 x 2310	3300 x 1700 x 2310
Permissible gross vehicle weight	2000	2400
Load capacity in kg	1125	1525
Tyre size in inches	15	15

The CARRUS, the exclusive horse trailer with anodised aluminium body designed for two horses.

The aerodynamic fairing, silver with shiny metallic surface finish, supports an economical way of travelling which is becoming ever more important in times of rising petrol prices. A positive side effect is, of course, less vehicle exhaust pollution of our environment.





Silver GRP-poly hood with aerodynamic reinforcements and patented WINDSCHOTT (deflector)



Tinted 5-way adjustable vent windows with safety bars inside



Can be equipped with normal tack room suitable for western saddles on request

STANDARD FEATURES

Benefits that convince: CARRUS – the alu-poly trailer from Humbaur

- **Chassis:** Hot galvanized CHAMP-FAHRWERK (chassis) with longitudinal beam chassis, rubber spring axles and independent wheel suspension in combination with CHAMP Octagon wheel shock absorbers, extremely low loading height and flat ramp angle
- **Floor:** ALUBICOMP-BODEN (floor) with two overlays of aluminium plates, also 8-mm-thick rubber bed with hammer finish surface, glued and sealed
- **Electric system:** Interior lighting can be switched on. Multifunctional safety lamps in the rear supports
- **Body:** The entire body is made of high-quality, double-walled, anodised aluminium profiles. All mountings, including those of the entrance door, are likewise made of anodised aluminium. The solid outside frame, the rear and front side support, the underride protection and the rear hinges are made of hot galvanized sheet steel that is powder-coated. Gas-spring-supported tail gate with rubber matting, including anti-slip strips and side slippage stop. It's crowned by the aerodynamically

reinforced GRP-poly hood with patented WINDSCHOTT (deflector). Tinted 5-way adjustable vent windows with safety bars for sufficient ventilation

- **Interior equipment:** Easily adjustable screwed-in centre separation wall (can also be locked with closed tail gait), with transparent soft PVC. Individual parts of the separation wall frame can be easily replaced due to the screw design. Panic locking device of divided chest bars can be unlocked from outside. 3-way adjustable, divided rear bars can be adjusted to the size of your horse



7000 SERIES



TECHNICAL DATA

RAPID ALU

Modell no.	7332	7333
Box dimensions in mm	3140 x 1710 x 2290	3140 x 1710 x 2290
Permissible gross vehicle weight	2000	2400
Load capacity in kg	1175	1575
Tyre size in inches	15	15

The RAPID ALU, the light horse trailer with anodised aluminium body, is designed for two horses. Due to its low weight it has a higher load capacity.

This aluminium horse trailer is crowned by the grey GRP-poly hood with aerodynamic reinforcements.





Poly hood with patented WINDSCHOTT (deflector) and easy-roll system



3-way adjustable, divided rear bars for perfect adaptation



Tinted 5-way adjustable vent windows with safety bars inside

STANDARD FEATURES

Benefits that convince:

RAPID ALU – the alu-poly trailer from Humbaur

- **Chassis:** Hot galvanized CHAMP-FAHRWERK (chassis) with longitudinal beam chassis, rubber spring axles and independent wheel suspension in combination with CHAMP Octagon wheel shock absorbers, extremely low loading height and flat ramp angle
- **Floor:** ALUBICOMP-BODEN (floor) with two overlays of aluminium plates, also 8-mm-thick rubber bed with hammer finish surface, glued and sealed
- **Electric system:** Interior lighting can be switched on. Multifunctional safety lamps in the rear supports
- **Body:** The entire body is made of high-quality, double-walled, anodised aluminium profiles. All mountings, including those of the entrance door, are likewise made of anodised aluminium. The solid outside frame, the rear side support and the underride protection are made of hot galvanized sheet steel that is powder-coated. Gas-spring-supported tail gait with rubber granulate matting. This provides for safe use by your horse. It's crowned by the aerodynamically reinforced GRP-poly hood with patented WINDSCHOTT (deflector)

Tinted 5-way adjustable vent windows with safety bars for sufficient ventilation

- **Interior equipment:** Easily adjustable screwed-in centre separation wall (can also be locked with closed tail gait), with transparent soft PVC. Individual parts of the separation wall frame can be easily replaced due to the screw design. Panic locking device of divided chest bars can be unlocked from outside. 3-way adjustable, divided rear bars can be adjusted to the size of your horse



7000 SERIES

OVERVIEW

SP



SPECIAL CLASS



7000 SERIES



TECHNICAL DATA

CLEON

Modell no.	7372	7373
Box dimensions in mm	3210x1720x2320	3450 x 1720 x 2350
Permissible gross vehicle weight	2000	2400
Load capacity in kg	980	1380
Tyre size in inches	13	14



The CLEON, the all-rounder of the horse trailers, is designed for two horses. It is a functional wood-poly trailer with a multitude of standard extras that cover all needs when transporting horses. Not just optimal for the journey with your horse, but also an aid for many other purposes.

The CLEON is available with anthracite side walls and a grey poly hood.





Front sloping surfaces on the GRP-poly hood with vent windows for easy exit



Divided centre separation wall made of wood and soft PVC – individually adaptable



Gas-spring-supported tail gate, can be rotated and pivoted, with rubber granulate matting

STANDARD FEATURES

Benefits that convince:

CLEON – the all-round horse trailer from Humbaur

- **Chassis:** Hot-dip galvanized CHAMP-FAHRWERK (chassis) with longitudinal beam chassis, rubber spring axles and independent wheel suspension in combination with CHAMP Octagon wheel shock absorbers, extremely low loading height and flat ramp angle
- **Floor:** The floor consists of special wood multiply glued so as to be waterproof, with float finish rubber bed.
- **Electric system:** Interior lighting can be switched on. Multifunctional safety lamps in the rear supports
- **Body:** The entire body is made of high-quality, plastic-coated and UV-resistant wooden platform gates that are multiply glued so as to be waterproof. All mountings, including those of the entrance door, are made of anodised aluminium profiles. The rear and front side support, the underride protection and the rear hinges are made of hot galvanized sheet steel that is powder-coated. Gas-spring-supported tail gate with rubber granulate matting can be rotated and pivoted. This provides for safe use by your horse. It's crowned by

the GRP-poly hood with aerodynamic reinforcements and patented WINDSCHOTT (deflector). Tinted 5-way adjustable vent windows with safety bars for sufficient ventilation

- **Interior equipment:** Divided centre separation wall made of wood and soft PVC, individually adaptable. Panic locking device of divided chest bar can be unlocked from outside



7000 SERIES



TECHNICAL DATA

CARRIAGE TRAILERS

Modell no.	7327 (RAPID)	7362 (ATIS)
Box dimensions in mm	3150 x 1700 x 2290	3380 x 1700 x 2300
Permissible gross vehicle weight	2400	2600
Load capacity in kg	1460	1625
Tyre size in inches	15	15
Modell no.	7345 (MADERO)	7355 (CARRUS)
Box dimensions in mm	3340 x 1710 x 2310	3300 x 1700 x 2300
Permissible gross vehicle weight	2600	2600
Load capacity in kg	1560	1530
Tyre size in inches	15	15

The RAPID, MADERO, CARRUS and ATIS models can be delivered with an extended drawbar and carriage body. The individual models correspond to the standard variants in equipment and quality.



Extended drawbar
for carriage transport



Steps on both
sides made
of aluminium



Two aluminium stand
rails, adjustable from
650 to 1330 mm

STANDARD FEATURES

Benefits that convince: CARRIAGE TRAILERS from Humbaaur

- **Chassis:** Like all Humbaaur horse trailers, the carriage trailer is also equipped with the hot galvanized CHAMP-FAHRWERK (chassis) with longitudinal beams that has been tried and tested for many years, rubber spring axles and independent wheel suspension in combination with CHAMP Octagon wheel shock absorbers. We thus attain optimal longitudinal stability since the tractive and shearing forces are introduced directly into the chassis through the end-to-end hot-dip galvanized frame longitudinal beams. Extremely long longitudinal beams that offer sufficient room for your carriage were built into the carriage trailer.
- **Body:** A solid aluminium base frame for the carriage, two aluminium stand rails that can be adjusted for a gauge of 650 to 1330 mm, two hot-dip galvanized steel stands, two loading ramps with aluminium side protective edge and transport bracket on the base frame and side steps left and right in front of the entrance and tack room door made of aluminium chequer plate are also part of the equipment.



7000 SERIES

CUSTOMIZED PRODUCTS

TRIO

Modell no.	7252	7253
Box dimensions in mm	4800 x 2050 x 2300	4800 x 2050 x 2300
Permissible gross vehicle weight	3000	3500
Load capacity in kg	1490	1910
Tyre size in inches	14	14



TRIO – the comfortable large-capacity trailer for transport of up to three horses. The large-dimensioned entrance and tack room doors and the solid ramp flap with special hinges and gas-filled shock absorbers (for safe opening and closing) are additional advantages of these trailers.

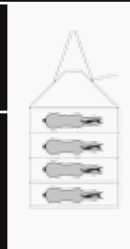
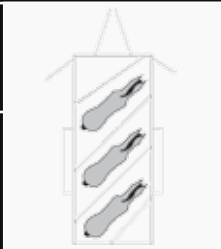
ISLAND

Modell no.	7033 (ISLAND 4)
Box dimensions in mm	3600 x 2350 x 2100
Permissible gross vehicle weight	2500
Load capacity in kg	1520
Tyre size in inches	15

Modell no.	7034 (ISLAND 5)
Box dimensions in mm	4200 x 2350 x 2100
Permissible gross vehicle weight	3000
Load capacity in kg	1920
Tyre size in inches	14



ISLAND – the solid small horse trailer for four to five Island horses. It has a large-dimensioned tack room that can be entered, with pivoting saddle and snaffle holders. Spare wheel with bracket (optional for additional charge). The frame consists of solid welded steel profiles with cross bracings. The chassis is completely hot-dip galvanized.



7000 SERIES

ACCESSORIES

The 7000 series offers you a huge range of accessories. Equip your horse trailer exactly according to your desires and needs. Rest assured that all accessories also meet our high quality standards.

General:

- Ramp flap in direction of travel, left or right
- Spare wheel bracket mounted in tack room
- Tail gate with rubber anti-slip strips
- Rotating and pivoting rear door
- Tack room GRP with tack room door
- Saddle holder and snaffle holder
- Tack room lighting
- Pivoting saddle rack for a saddle outside
- Mirror in tack room door
- Cargo net for tack room, loose
- Rubber kick protection for tack room
- Western design (integr. feeding troughs, tack room (extendible western saddle holder, snaffle holder, pad holder)

Body:

- Roof fan (not with CLEON)
- Patented WINDSCHOTT (deflector) for draft-free interior ventilation

Tyres:

- Spare wheel
- Spare wheel on aluminium rim 15"
- Spare wheel bracket
- Wheel set, 15" aluminium rims instead of steel rims

Floor:

- ALUBICOMP-BODEN (floor) instead of wooden floor
- Rubber bed glued and sealed, 8 mm

Electric system:

- 3. Brake lamp

Chassis:

- AKS safety coupling, 2000 kg / 2400 kg
- Wheel shock absorbers, loose with mounting material
- Ramp device with oil-hydraulic control
- Automatic support wheel, centrally mounted
- Wheel shock absorbers, mounted

Interior equipment:

- Continuous chest bar
- Foal grating
- Height-adjustable rear bars
- Height-adjustable chest bar
- Front camera for interior
- Head separation wall
- Saddle rack bar for 2 saddles (outside)
- Side cushioning mounted left and right
- Side cushioning left and right, included loose
- Side kick protection, mounted
- Side kick protection, included loose



Spare wheel with bracket fastened on the side wall



Spare wheel with bracket mounted in the tack room



Spare wheel bracket



Height-adjustable rear bars



Height-adjustable chest bars



Continuous chest bar for foal transport



Foal grating



Aluminium rims



Side cushioning



Side kick protection



Head separation wall

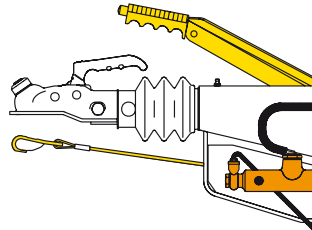


Camera with TFT

7000 SERIES



AKS safety coupling



Ramp device with
oil-hydraulic control



Automatic support wheel,
centrally mounted



13-pole plug (standard)



Rubber matting



3. Brake lamp



Wheel shock absorbers,
mounted



Wheel shock absorbers



Patented WINDSCHOTT
(deflector)



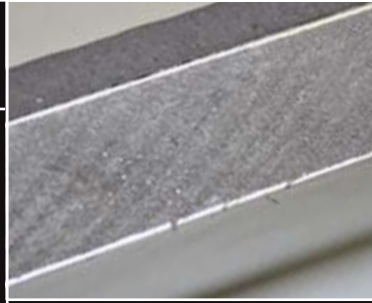
Roof fan



Ramp flap in direction of travel
left/right



Rotating and pivoting rear door



ALUBICOMP-BODEN (floor)



Rubber bed, 8 mm with hammer
finish surface



Rubber kick protection for
tack room



Tack room lighting



Pivoting saddle rack



Mirror, tack room



Cargo net, tack room



Saddle rack bar outside,
powder-coated

7000 SERIES

MATRIX

The accessories of the horse trailers at a glance:

Weights and dimensions approximate, changes due to additional equipment possible. Let your competent Humbaure dealer advise you.

Key:

- possible as accessory
- not available
- ★ standard equipment
- upon request

Customized products upon request
(Contact your Humbaure dealer)

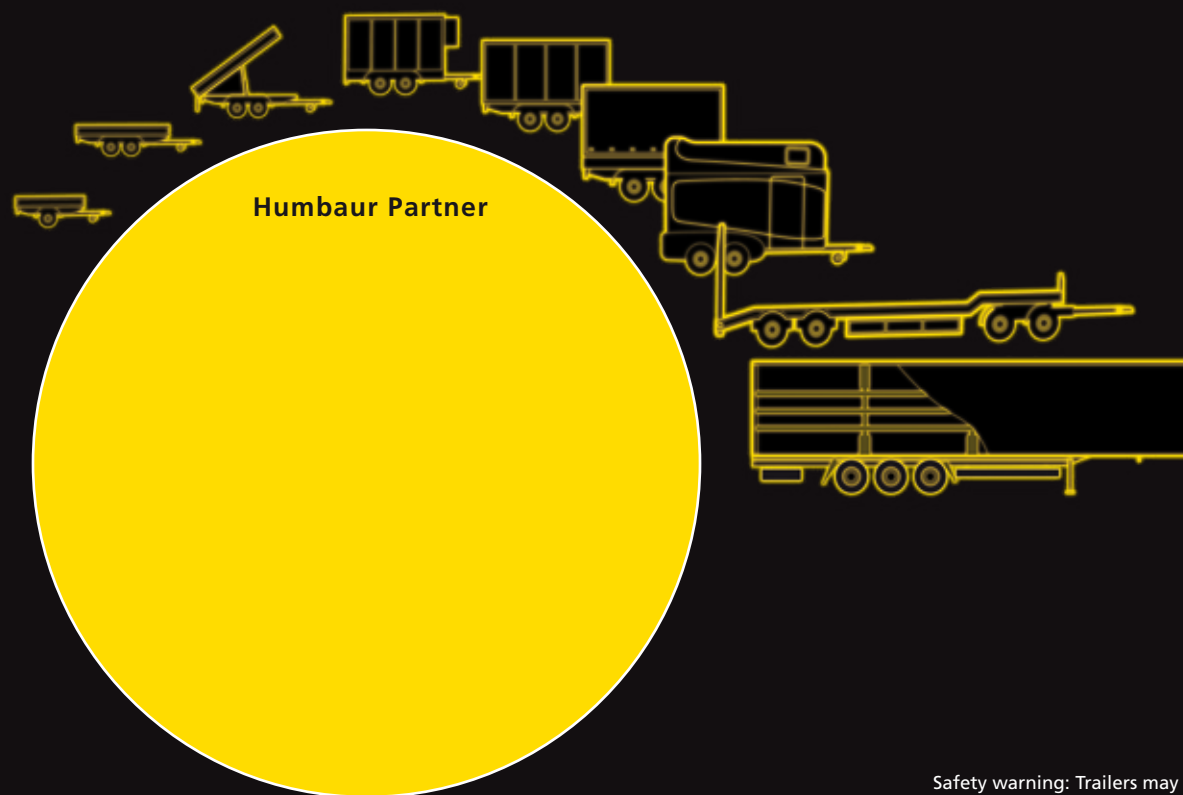
S7000 HORSE TRAILERS												
	MAXIMUS	PEGASUS	ATIS	MADERO	RAPID	SPIRIT	SINGLE	CARRUS	RAPID ALU	CLEON	TRIO	ISLAND 4 or 5
L	3480	3370	3350	3340	3150	3150	3150	3300	3140	3210	4800	Size depending on model
W	1720	1710	1710	1710	1700	1700	1350	1700	1710	1720	2050	
H	2350	2300	2300	2310	2290	2290	2280	2310	2290	2320	2300	
GENERAL												
Ramp flap in direction of travel, left or right	—	—	—	—	—	—	—	—	—	●	—	—
Spare wheel bracket mounted in tack room	●	●	—	—	—	—	—	—	—	—	●	●
Tail gate with rubber anti-slip strips	★	★	★	★	●	—	●	★	●	●	★	★
Rotating and pivoting rear door	—	—	●	●	●	—	●	●	●	★	—	—
Tack room GRP with tack room door	★	★	★	●	●	●	●	●	●	—	—	—
Saddle holder and snaffle holder	★	★	★	●	●	●	●	●	●	—	★	★
Tack room lighting	★	★	●	●	●	—	●	●	●	—	★	●
Pivoting saddle rack for one saddle, outside	●	●	●	●	●	●	●	●	●	●	●	●
Mirror in tack room door	★	★	●	●	●	●	●	●	●	—	●	●
Cargo net for tack room, loose	●	●	●	●	●	●	●	●	●	—	●	●
Rubber kick protection for tack room	●	●	●	●	●	●	●	●	●	—	●	●
Western design (integr. feeding troughs, tack room with extendible western saddle holder, snaffle holder, pad holder)	—	—	●	●	●	—	—	●	●	—	—	—
BODY												
Roof fan	●	●	●	●	●	●	●	●	●	●	●	—
Patented WINDSCHOTT (deflector)	—	—	★	★	★	●	★	★	★	★	—	—
WINDFLAP	★	★	—	—	—	—	—	—	—	—	—	—
TYRES												
Spare wheel	●	●	●	●	●	●	●	●	●	●	●	●
Spare wheel on aluminium rim, 15"	●	●	●	●	●	—	—	●	●	●	—	—
Spare wheel holder	●	●	●	●	●	●	●	●	●	●	●	●
Spare wheel, 15" aluminium rims instead of steel rims	●	●	●	●	●	—	—	●	●	●	—	—
FLOOR												
ALUBICOMP-BODEN (floor) instead of wooden floor	★	★	●	●	●	—	—	★	●	●	—	—
Rubber bed, glued and sealed 8 mm	★	★	★	★	★	●	●	★	★	—	—	—
ELECTRIC SYSTEM												
3. Brake lamp	—	—	●	●	●	●	●	●	●	●	—	—
CHASSIS												
AKS safety coupling	●	●	●	●	●	●	●	●	●	●	●	●
Ramp device with oil-hydraulic control	●	●	●	●	●	○	●	●	●	—	—	—
Automatic support wheel, centrally mounted	★	★	★	★	★	○	○	★	★	★	★	★
Wheel shock absorbers, mounted	★	★	★	★	●	●	●	★	●	★	★	★
Wheel shock absorbers, loose with mounting material	—	—	—	—	●	●	●	—	●	—	—	—

	S7000 HORSE TRAILERS												
		MAXIMUS	PEGASUS	ATIS	MADERO	RAPID	SPIRIT	SINGLE	CARRUS	RAPID ALU	CLEON	TRIO	ISLAND 4 or 5
	L W H	3480 1720 2350	3370 1710 2300	3350 1710 2300	3340 1710 2310	3150 1700 2290	3150 1700 2290	3150 1350 2280	3300 1700 2310	3140 1710 2290	3210 1720 2320	4800 2050 2300	Size depending on model
INTERIOR EQUIPMENT													
Continuous chest bar		●	●	●	●	●	●	★	●	●	—	—	—
Foal grating		●	●	●	●	●	●	●	●	●	●	—	—
Height-adjustable rear bars		●	●	●	●	●	●	●	●	●	●	○	○
Height-adjustable chest bars		●	●	●	●	●	●	●	●	●	●	○	○
Front camera for interior		●	●	●	●	●	●	●	●	●	●	●	●
Head separation wall		●	●	●	●	●	●	—	●	●	—	—	—
Saddle rack bar for 2 saddles (outside)		●	●	●	●	●	●	●	●	●	●	●	●
Side cushioning mounted left and right		★	●	●	●	●	●	●	●	●	●	●	●
Side cushioning left and right, included loose		○	●	●	●	●	●	●	●	●	●	●	●
Side kick protection, mounted		★	★	●	●	●	●	●	●	●	●	○	○
Side kick protection, included loose		—	—	●	●	●	●	●	●	●	●	●	●



Competence in Trailers

HUMBAUR ... CLOSE TO THE CUSTOMER!



Safety warning: Trailers may only be used in complete compliance with road traffic and health and safety regulations and following the correct procedures for securing loads. We accept no responsibility for mistakes or typographical errors. Illustrations similar / some trailers display special equipment. Subject to technical revision. Printed in Germany. Reproduction prohibited 09/03.

Order no.: 009.00016